



St. Paul's Monastery

Sisters of Saint Benedict

2675 Benet Road

St. Paul, MN 55109

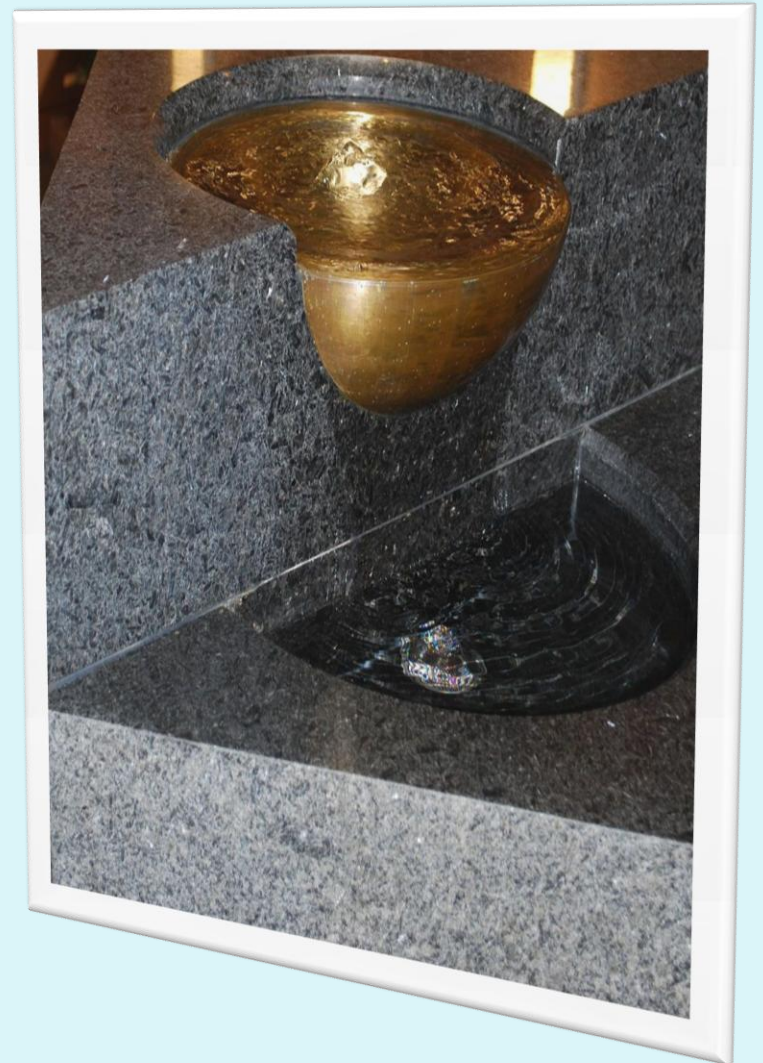
651-777-8181

www.stpaulsmonastery.org

The Wisdom Prayer

I, Wisdom, am with you.
I am a light that will never grow dim.
Love me and you will see me.
Look for me and you will find me.
At the slightest indication of your desire for me,
I will make myself known to you.
Watch for me at the very start of what you
are about, and you will have no trouble.
You will find me, ever present, sitting at your table.
Even thinking about my presence will help you.
Be aware of my presence, my concern,
my willingness to inspire and to instruct you.
As you meet with each other,
I will meet with each and all of you.

Wisdom 6.12-17



Vision Statement

We, the Sisters of St. Paul's Monastery, are a community who live the
Rule of St. Benedict based on Gospel values.

Through our liturgical life and wise stewardship, we create sacred space from
which we respond to the needs and challenges of church and society.



Saint Scholastica and Saint Benedict

Former Monastery

1965-2009

2675 Larpenteur Ave.
St. Paul, MN 55109



Ground Breaking April 24, 2008



Campus

These new partnerships with Tubman Family Alliance and CommonBond Communities reflect our Benedictine commitment to hospitality for all and compassion to those in need. With these new partners, that light will not grow dim.



2675 Benet Road St. Paul, MN 55109

2009 - Present



The Sisters moved into the new monastery on the Feast of Saint Scholastica, February 10, 2009.

*“All Guests are to be received as
Christ.”* RB: 53



Main Entrance

Hospitality Wing



West View of the Monastery and Chapel

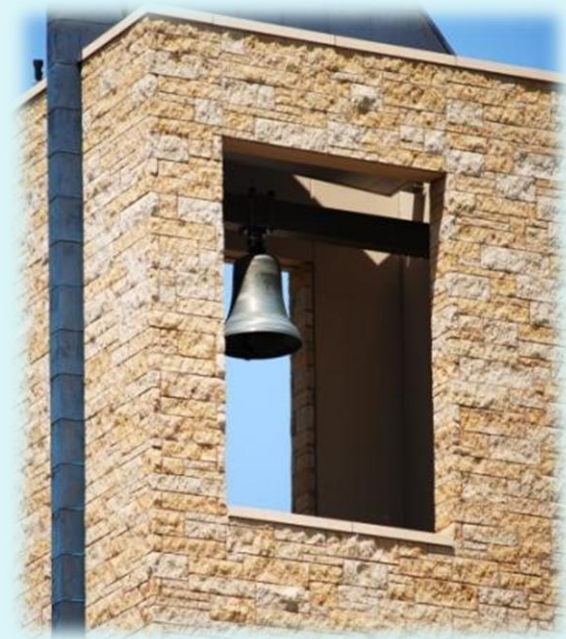


Monastic Cemetery

West View of the Monastery



Bell Tower



We invite all to join the
monastic community in
prayer and Eucharist.

Court Yard

A meditative garden area features Mankato limestone from the former monastery. A pathway leads from the garden to the Sisters' cemetery, the grotto, and monastery grounds.



Monastery Grounds

Stewardship is another value which, like hospitality, captures the essence of Benedictine life.



*"Listen carefully, to the master's instructions,
and attend to them with the ear of your heart. "* RB: Prologue



Narthex

-A space flows gently from the front entrance to the chapel to the refectory.



Baptismal Font



Baptism is an initiation into the monastic life.

“We intend to establish a school for the Lord's Service”

RB: Prologue

Chapel

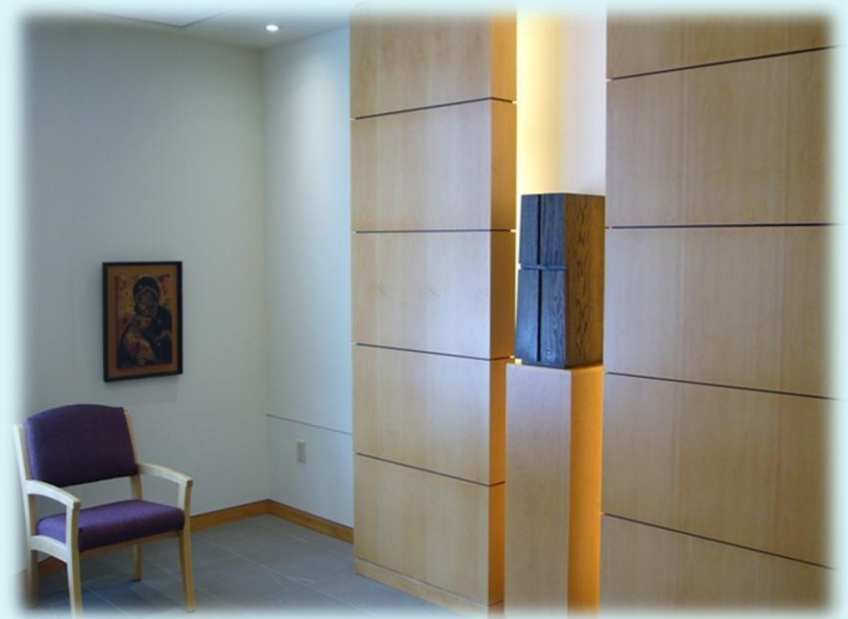
*"Let us set out on our way with the Gospel
as our guide."* RB: Prologue



“Prefer nothing to the work of God” RB: 4



Eucharistic Chapel



Cloister Walk



Community Room-

A gathering place for the Sisters as they come together for conversation, social gatherings, celebrations and activities.



Serving Area to the Dining Room



Dining Room/Refectory

-A key place for hospitality as Sisters and guests share meals and stories.



Healthcare Center-

A special place for assisted living and in-house medical support to care for our elderly Sisters.



Library

Tailored to interests in monasticism, the library includes books on monastic traditions, theology, spirituality, biographies, poetry and fiction.



Benedicta Riepp Room



Guest Room

Hospitality wing provides accommodations for overnight guests and groups.



Scholastica Room



Sponsored Ministries

The Benedictine Center



Mission Statement

The Benedictine Center shares the monastic heritage of St. Paul's Monastery with all who seek to live with the Gospel as their guide.

Visions Statement

The Benedictine Center is a sacred threshold between St. Paul's Monastery and the wider world.

The Benedictine Center forms a "school for the Lord's service" in the tradition defined by St. Benedict and flourishes in the midst of a monastic community that bears witness to the power of hospitality, conversation, and mutual service.

Through prayer, study and discernment, the Benedictine Center guides people in developing a contemplative heart open to the message of the Gospel and the discovery of God's presence at the core of their lives.

Maple Tree Childcare Center, located on the grounds of St. Paul's Monastery, is a quality childcare center in a Christian pre-school environment that was created in response to a lack of childcare options in the area. It currently serves 70 children.



*“If you hear God’s voice today,
harden not your hearts”* RB: Prologue



*That in all things
God
may be glorified!*

